

Nulstilling af Internet Explorer settings Bjørn Nordgaard Lassen, 2009-02-24

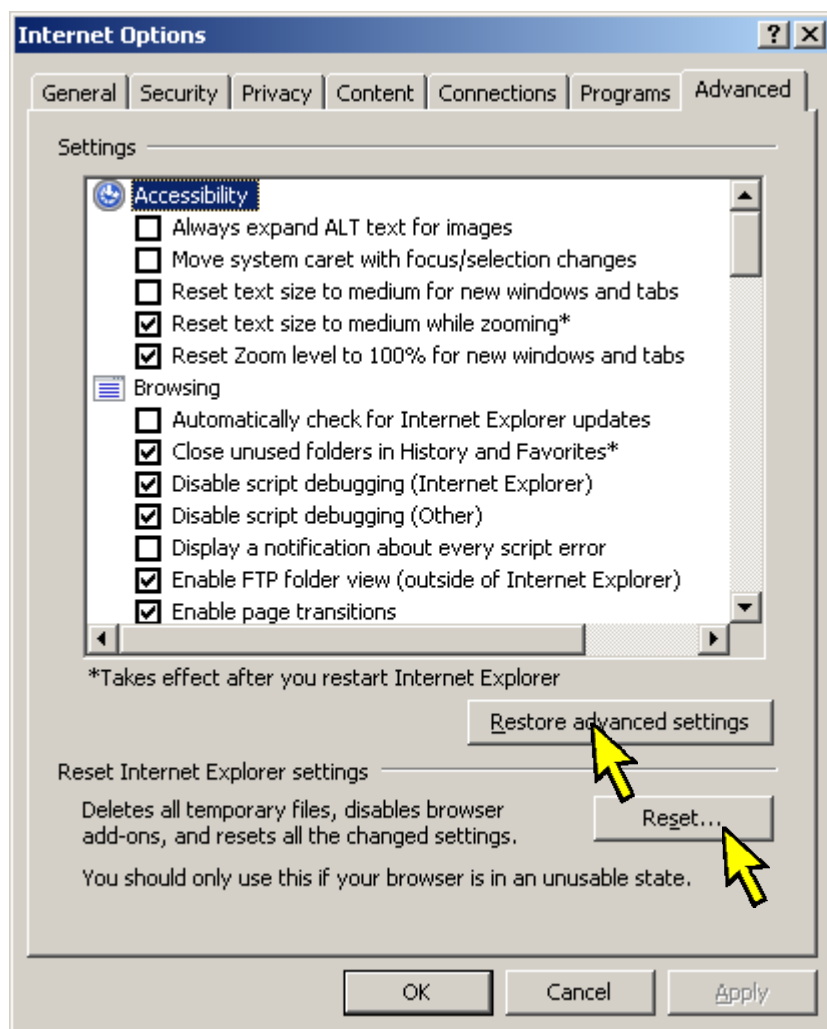
Hvis man i DANBRO+ oplever problemer som andre brugere ikke oplever, eller som man ikke selv har hvis man logger ind på en anden pc, er det nærliggende at det kan have noget med indstillinger i Internet Explorer at gøre.

I nogle tilfælde vil det kunne afhjælpes ved at nulstille indstillinger i Explorer. Bemærk at dette sletter diverse gemte data, som for eksempel gemte passwords og den slags. Se nedenfor for en mere udtømmende beskrivelse af hvad der slettes.

Luk alle andre åbne programmer.

I Internet Explorers hovedmenu, vælg Tools | Options.
Vælg fanen "Advanced" som vist nedenfor.

Klik på de to knapper "Restore advanced settings" og "Reset".



I nedenstående uddrag fra Explorers hjælpesystem kan man se hvad der sker når man vælger Reset.

Reset Internet Explorer to the default settings

By resetting Internet Explorer to its default settings, you return it to the state it was in when it was first installed on your computer. This is useful for troubleshooting problems that might be caused by settings that were changed after installation. When you restore Internet Explorer's default settings, some webpages that rely on previously stored cookies, form data, passwords, or previously installed browser add-ons might not work correctly. Resetting Internet Explorer to its default settings does not delete your favorites, feeds, and a few other personalized settings. See the table below for a complete list of all settings and information about whether they are reset or maintained.

If you purchased your computer with Windows already installed, any settings the manufacturer specified will be reapplied. These settings might include a specific home page or search provider.

The following table describes what will happen to various settings when you reset Internet Explorer.

Settings categories	Items affected
Settings that are deleted	<ul style="list-style-type: none">• Browser history, temporary Internet files, cookies, form data, and stored passwords• Typed URL information, offline webpages, menu extensions• Websites added to intranet, trusted, or restricted zones• Websites added for special cookie handling under the Privacy tab• Websites allowed to use pop-ups under Pop-up Blocker settings• Explorer most recently used list
Settings that are reset to Windows or manufacturer defaults	<ul style="list-style-type: none">• Home page (for more information on backing up your home page tabs, click Related Topics)• Search providers, tabbed browsing settings• Colors, languages, fonts, and accessibility settings (General tab)• Security settings for all zones (Security tab)• Advanced tab settings• Privacy tab settings• Pop-up blocker, AutoComplete, Phishing Filter, and Zoom settings• Page setup, toolbar, and text size settings• Feeds settings (sync and notification, not feeds themselves)• ActiveX controls that are not on the pre-approved list (reset to opt-in state)• Toolbars, browser helper objects, and browser extensions are disabled
Settings and items that are maintained	<ul style="list-style-type: none">• Favorites• Feeds• Content Advisor settings

- Pre-approved ActiveX controls
- Temporary Internet file (cache) path settings
- Certificate information
- Internet Programs (e-mail, instant messenger, and other programs associated with Internet use)
- Internet connection, proxy, and VPN settings
- Default web browser setting